

HARDWAREMFG.com



***YOUR HIGH VOLUME,
SMALL PLASTIC PARTS
SPECIALIST***



CUSTOM, HIGH VOLUME INJECTION MOLDING

When businesses have a need for high volume, intricate parts, they turn to plastic injection molding. This process provides a high level of production while minimizing the cost per unit. We are an ISO 9001-2008 certified manufacturer, has earned a reputation for being one of the best in the industry.

With decades of experience in building precision molds, we have the skills required to meet the most exacting standards. We are world renowned for producing injection molded plastic components of the very highest quality and precision at **highly competitive prices**. You can be sure of excellence in all stages of design, tooling and manufacturing.

Our turnkey approach to manufacturing insures you get the quality, price and delivery required without the problems of dealing with off-shore suppliers. We work with each individual client and use the best material available for each application. We will design and build your mold and monitor your quality specifications throughout the manufacturing process. We will stock and monitor pre-determined quantities of your products to ensure Just-in-Time delivery of your plastic injection molded components. Let us help you with your next custom project. We'll turn your ideas into achievements.



FACILITY

Automation abounds, from our 3D computerized design capabilities and automated tool fabrication processes to our computerized and automated plastic injection molding machines and robots. The entire facility is set up to produce the highest quality, most economical plastic injection molded components in the industry.

Our presses are managed by an expert staff that continuously evaluates the condition of equipment to ensure optimal performance. Every machine is equipped with a robot, either a robotic picker or a full-blown servo-robot. Parts are counted and boxed as they are made and automated conveyors index the box out of the way and install an empty box in its place.

Baxter, our first adaptive manufacturing robot assists with completing repetitive production tasks and complements our highly automated facility. Each press is microprocessor-controlled and self-diagnostic, with capacities from fractional to 43 ounces, and clamping force from 46 to 400 tons.



MANUFACTURING AND QUALITY

Our plant has over 105 presses with a range of 46-400 tons, fully automated and with a full production schedule (24 hours, 7 days a week) during most of the year to maximize efficiency. Quality control checks of product tolerances, color and physical appearance are made at every step of the manufacturing process. We serve a diverse group of over 50 industries and over 500 unique products including consumer products, window & door, medical, food & beverage, construction, pharmaceutical and toys.



Quality in Precision Injection Molding

Flawless performance, exemplary products and competitive prices are all attributes our customers use to describe us. We challenge ourselves each day and have developed into one of the finest injection molders in the world. We invite you to challenge us and our capabilities.

Efficiency

Every aspect of our office and production facility reflects our dedication to quality, precision and efficiency. From our computer-aided design department and CNC driven tool room to our highly automated manufacturing floor, we pride ourselves on our attention to detail.

Skill

We are passionate about providing our customers with defect-free products at the best price possible. Trained plastic processing and QA technicians utilize verified procedures that guarantee our product quality 24/7. In addition to our established Metrology Lab standard inspection processes, is exceedingly proficient at providing real-time 100% part vision inspection during manufacture.

Precision

Every injection mold is designed and manufactured in-house by skilled craftsman that optimize each phase of the mold making process. Our molds, produced from tool grade stainless steel, provide reliable economy and productivity. This results in a symphony of automated machinery running around the clock supplying our customers with exceptional quality products at cheaper-than-China prices.

Consistency

From universal plugs and caps, to custom fasteners and gears, our dedication to precision and quality means that you can depend on parts that meet your exact specifications and cost requirements order after order, year after year. If one of our standard products or components doesn't meet your requirements, just give us a call and chances are we can produce the variation you need at minimal or no additional cost.

ISO 9001:2008 Certified

Rodon is proud to manufacture our products under an ISO 9001:2008 certified quality management system. Our Quality Management System is registered and certified by the internationally recognized British Standards Institution (BSI).



CUSTOM PARTS

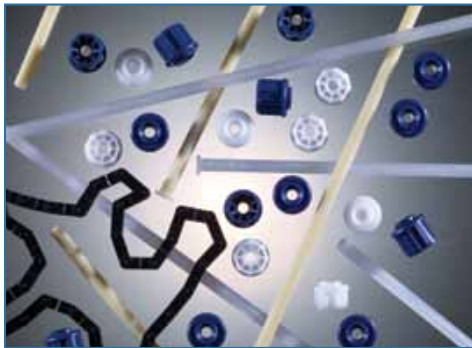
Custom Components to Meet Your Precise Requirements

Here is just a sampling of custom parts we manufacture for customers around the world. In most instances, our clients choose us because of our reputation for precision, quality and advantageous pricing in the manufacture of pre-designed parts.

We help our customers realize their design goals, come in ahead of schedule, on budget and at a level of precision and quality unequaled anywhere in the world.



Tubes & Vials



Rods, Links & Bearings



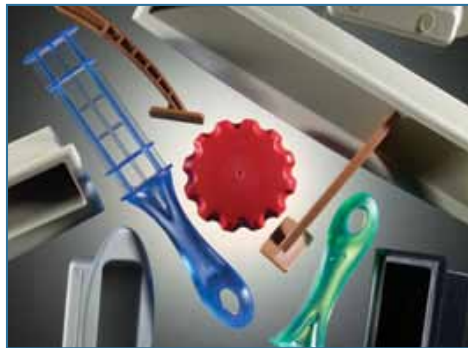
Point of Purchase Display Products



File Cabinet & Furniture Hardware



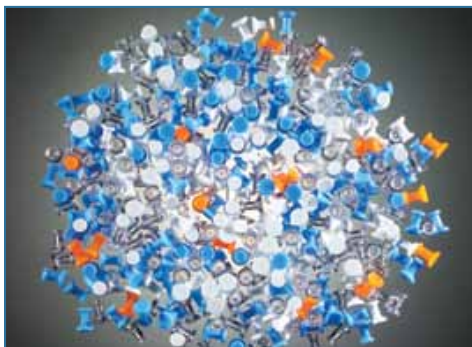
Specialty Hand Tools



Custom Handles & Knobs



Drive Assembly Components



Push Pin Heads



Pharmaceutical & Medical Products



Bed Frame Hardware

CUSTOM PARTS



Sign Holders & Frames



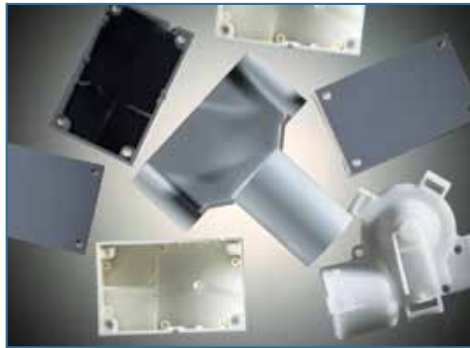
Window & Screen Hardware



Custom Caps & Plugs



Toy Components



Motor & Drive Housings



Shower & Bath Products



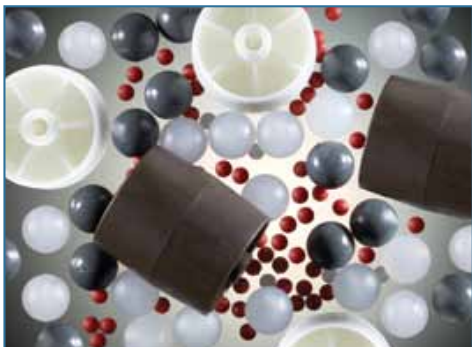
Tube Connectors & Brackets



Food & Beverage Components and Assemblies



Eyeglass Cases & Clips



Wheels & Bearings



Standard Caps, Plugs, Hosewashers & Fasteners



Custom Fasteners

STANDARD PARTS

Our standard caps, plugs, fasteners and spacers deliver consistent quality year after year. If our standard doesn't meet your exact specifications, just give us a call. Chances are we can produce the variation you need.

Our line of Universal Plugs is designed to maximize manufacturing efficiency by speeding production and lowering inventory costs. Its unique annular fin design provides a positive fit for a wide range of tubing wall thicknesses with a single component. Within its 14-23 gauge range, the Universal Plug greatly reduces the number of plug I.D.'s needed in inventory. One plug per tube O.D. does the job, often with improved fit. Round, square or rectangular, Universal Plugs can make a substantial difference in efficiency and production costs.

Standard plugs include a wide range of plastic plugs, flat head plugs, rectangular plugs, square plugs, forked plugs, ball plugs, specialty plugs, split stem & stem bumpers, beveled edge hole plugs and flat top hole plugs. In-house design services for specific custom plastic plugs are available. To see for yourself, contact us for samples today.



Ball Head Universal

Part No. Tube O.D.

C16U21	1/2"
C20U21	5/8"
C24U21	3/4"
C28U21	7/8"
C31U21	31/32"
C32U21	1"
C36U21	1 1/8"
C40U21	1 1/4"
C48U21	1 1/2"
C56U12	1 3/4"
C64U12	2"



Square Universal

Part No. Tube O.D.

T16U2	1/2"
T20U2	5/8"
T24U2	3/4"
T28U2	7/8"
T32U2	1"
T40U2	1 1/4"
T48U2	1 1/2"
T64U2	2"
T80U2	2 1/2"
T96U2	3"



Rectangular Universal

Part No. Tube O.D.

P32U64	1 x 2"
P32U96	1 x 3"
P48U96	1 1/2 x 3"
P64U96	2 x 3"
P64U112	2 x 3 1/2"



Flat Head Universal

Part No. Tube O.D.

C16U2	1/2"
C20U2	5/8"
C24U2	3/4"
C28U2	7/8"
C32U2	1"
C36U2	1 1/8"
C40U2	1 1/4"
C48U2	1 1/2"
C56U2	1 3/4"
C64U2	2"

Flat Head Plugs



Part No. Tube O.D. Fits Gauges

C162	1/2"	19-18
C202	5/8"	20
C20B2	5/8"	21
C242	3/4"	19-18
C24B2	3/4"	22
C282	7/8"	20
C28C2	7/8"	16
C312	31/32"	20-18
C322	1"	21-20
C32A2	1"	18
C32B2	1"	22
C32C2	1"	16
C36D2	1 1/8"	14
C403	1 1/4"	20-19
C40A2	1 1/4"	18
C40C3	1 1/4"	16
C40D2	1 1/4"	14
C442	1 3/8"	20
C44A2	1 3/8"	18
C48A2	1 1/2"	18
C48A2A	1 1/2"	15
C48D2	1 1/2"	14
C52C2	1 5/8"	16
C563	1 3/4"	20
C56C3N	1 3/4"	16
C58C2	1 13/16"	16
C64C3N	2"	16
C64D3	2"	14
C80F2	2 1/2"	15

Square Plugs



Part No. Tube O.D. Fits Gauges

T24	3/4"	20-19
T26	13/16"	20
T28	7/8"	20
T32	1"	19-18
T32GM	1"	20
T32C	1"	16
T32C3N	1"	16
T32D	1"	14
T40C	1 1/4"	16-15
T40D	1 1/4"	15-14
T40E	1 1/4"	13-12
T48A2	1 1/2"	18
T48C3N	1"	16
T48E	1 1/2"	12
T56C2	1 3/4"	16-15
T64A	2"	19-18
T64C	2"	16
T64D	2"	15-14



Ball Caps

Part No. O.D. Fits Over Tubing

AD16	1"	1/2
AD20	1"	5/8
AD24	1 1/4"	3/4
AD28	1 7/16"	7/8
AD32	1 7/16"	1
AD33	1 7/16"	1 1/32



Forked Plugs*

Part No. Tube O.D. Fits Gauges

FP242	3/4"	21-16
FP2421	3/4"	21-16
FP322	1"	20-16
FP3221	1"	20-16

*Can be captured by screw or rivet



Beveled Edge Hole Plugs

Part No. Hole Size Plug Diameter Work Thickness

711	3/4"	1.04"	0.060"-0.080"
709	1"	1.40"	0.060"-0.100"



Rectangular Plugs

Part No. Tube O.D. Fits Gauges

P1648	1/2 x 1 1/2"	18
P2048	5/8 x 1 1/2"	20
P2064	5/8 x 2"	17
P32D48	1 x 1 1/2"	16-15-14
P3264	1 x 2"	21-20
P32A64	1 x 2"	18-17
P32C64	1 x 2"	16
P3280	1 x 2 1/2"	15
P40A80	1 1/4 x 2 1/2"	20-19-18



Specialty Plugs

Inside-Outside
AC-32 fits inside 1" and over edges
16, 15, 14 gauges



Flat Top Hole Plugs

Part No. Hole Size Plug Diameter Work Thickness

710	3/4"	0.99"	0.10"-0.100"
708	1"	1.23"	0.10"-0.100"



Rectangular Caps

Part No. Fits Over Tubing

R3264	1 x 2"
R3296	1 X 3"
R6496	2 X 3"

STANDARD PARTS



Tubing Caps

Part No.	Fits Over Tubing
AG10	5/16"
AG12	3/8"
AG14	7/16"
AG16	1/2"
AG20	5/8"
AG24	3/4"
AG28	7/8"
AG30	15/16"
AG31	31/32"
AG32	1"
AG36	1 1/8"
AG40	1 1/4"
AG48	1 1/2"
AG52	1 5/8"
AG56	1 3/4"
AG64	2"



Caster Sockets for Beds

Part No.	Fits Over Tubing	Stud Length
CS2410	3/4" Round	5/16"
CS2610	13/16" Round	5/16"
CSS3212	1" Square	3/8"



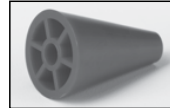
Reducing Silencers

Part No.	Fits Over Tubing	Hole Size
AGL2875	7/8"	3/4"
AGL3251	1"	1/2"
AGL3285	1"	7/8"
AGL36100	1 1/8"	1"



Concrete Form End Tips

Part No.	Fits Over Wire
1300	0.306
1301	0.283
1302	0.262
1304	0.225
1305	0.207
1306	0.192
1307	0.177



Standard Snap-Tie Cones*

Sizing

3/4" x 1 1/2"
1" x 1"
1" x 1 1/2"
1 1/4" x 1 1/2"

*Special cones possible. Please advise sizing requirements.



Vinyl Garden Hose Washer

HW-1
Fits standard 1" garden hose coupling; has tabs to help ensure positive sealing.



Vinyl O-Rings

327 O-Rings
1" O.D. May be preferred in place of HW-1, in specific applications.



Clips for Eyeglass Case

Clip replaces metal and fabric subassembly; gets heat sealed to vinyl case.



Stem Bumpers*

Part No.	Tube O.D.	Head Thickness
2013	1/4"	3/16
2015	1/4"	5/16
2025	5/16"	11/32

*Used on stacking chairs



Square Caps

Part No.	Fits Over Tubing
S16	1/2"
S20	5/8"
S24	3/4"
S32	1"
S40	1 1/4"
S48	1 1/2"



Angle Iron Caps

Part No.	Leg1/Leg2
L4040	1 1/4" x 1 1/4"
L4848	1 1/2" x 1 1/2"
LB3232	1" x 1" with web
LB4848	1 1/2" x 1 1/2" with web



Removable Fasteners

CF 8-20 fits hole size 1/4", work thickness 3/4". Used where occasional removal may be required.



Split Stem Bumpers*

Part No.	Tube O.D.	Head Thickness
243SSB	1/4"	1/4
245SSB	1/4"	1/16

*Used on stacking chairs



Heavy Caps*

Part No.	Fits Over Tubing
AH20	5/8"
AH24	3/4"
AH28	7/8"
AH31	31/32"
AH32	1"
AH40	1 1/4"
AH48	1 1/2"

*Extra length, extra heavy duty, premium wall thickness. 1" height.



Wire Tips

Part No.	Fits Over Wire
AW6	3/16"
AW8	1/4"



Heavy Vinyl Tips

Part No.	Fits Over Tubing
VT20	5/8"
VT24	3/4"



Concrete Form Bullet Caps

Part No.	Fits Over Wire
3002	0.262
3004	0.225
3006	0.192



Bushings for Telescoped Tubing

Part No. 145



Finned Fasteners*

Part No.	Hole Size	Shaft	Head Diameter	Work Thickness
PF816	1/4"	1/2"	11/16"	0.180-0.220
PF820	1/4"	5/8"	11/16"	0.180-0.380
PF824	1/4"	3/4"	11/16"	0.180-0.570
PF828	1/4"	7/8"	11/16"	0.180-0.700
PF832	1/4"	1"	11/16"	0.180-0.820
PF840	1/4"	1 1/4"	11/16"	0.180-1.070
PF848	1/4"	1 1/2"	11/16"	0.180-1.320
PF856	1/4"	1 3/4"	11/16"	0.180-1.570
PF624	3/16"	3/4"	0.6"	0.07-0.53

*These are used for one-time application, and are purposefully difficult to remove



Push Fastener

Part No.	Hole Size	Shaft	Head Diameter	Work Thickness
PF620	3/16"	5/8"	13/32"	0.228
PF631	3/16"	5/8"	27/64"	0.325
PF811	1/4"	11/16"	1/2"	0.187



Two Piece Removable Rivet

Part No.	Hole Size	Grip Range	Description
802	n/a	n/a	Male Part
803	1/4"	0.50"-0.050"	Female Part

You must fully evaluate product suitability and durability for your specific application under extreme actual field use conditions; Rodon LLC assumes no responsibility for end use applications, and no performance warranty is expressed or implied. See full product disclaimer at www.rodongroup.com.